

ADVANCED METALS FOR SPECIALIZED FITTING SOLUTIONS

PCC Energy Group is one of the most versatile fitting manufacturers in the world. The PCC Energy Group's fittings product line ranges from commodity to high-end, heavy-wall components serving high pressure, high temperature, corrosive environments as well as cryogenic and nuclear applications. PCC Energy Group is a division of Precision Castparts Corp. (PCC), the world leader in structural investment castings, forged components, and aerostructures. PCC Energy Group expands upon PCC's rich tradition of manufacturing excellence to serve the energy markets.

FITTINGS PORTFOLIO

PCC Energy Group manufactures both seamless and welded fittings including elbows with tangent lengths, straight and reducing tees, special tees with extended run, concentric and eccentric reducers, and caps.



SIZE RANGE

Fittings are available from 1/2" NPS SCH 10S up to 30" O.D. x 2.4" wall seamless and up to 60" O.D. x 2.4" wall welded.

ALLOYS OFFERED

- Nickel Super Alloys
- Duplex Alloys
- Super Duplex Alloys
- Titanium Alloys
- Super Austenitics
- Special & Standard Stainless Steels
- 6Mo Grades

THE PCC ADVANTAGE

PCC Energy Group is the only fittings manufacturer backed by internal supply of nickel and titanium direct from a mill. Our unique supply chain supported by in-house nickel and titanium alloy production leverages internal alloy supply and asset redundancy for increased capacity. We are able to hold common stock and offer shortened lead times.



SOPHISTICATED SOLUTIONS

PCC Energy Group has a history of innovative solutions for the fittings market:

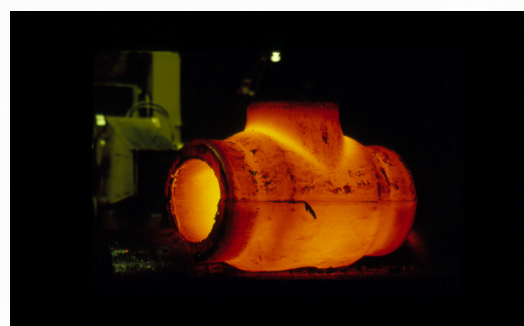
- Manufacture of welded elbows with weld seam located in the neutral zone
- Development of floating mandrels for the production of a variety of fittings
- Hydromechanical processing of large diameter (>16") thin wall elbows with only one seam

PCC Energy Group's unique 12,000 ton hydroforming press produces tees up to 42" O.D. with wall thicknesses up to 6".

SAFETY. QUALITY. DELIVERY.

PCC Energy Group is committed to safety and quality; therefore, all manufacturing processes are rigorously monitored, tested, and inspected throughout the manufacturing process. The PCC Energy Group's quality management systems are approved by internationally recognized accrediting bodies and holds the following approvals and certifications:

ISO 9001 • EU PED • NORSOK • KTA 1401 • AVS D 100/50



CAPABILITIES RANGE									
	NICKEL	TITANIUM	STAINLESS	DUPLEX/SUPER DUPLEX	CARBON/HIGH YIELD				
BILLET/ BAR	OD: 0.5"-15"						OD: 0.5"-18"		OD: 0.5"-18"
WIRE	THK: 0.035"-0.125"								THK: 0.035"-0.125"
SHEET/ PLATE	THK: 0.01"-4" WD: 0.75"-98"						THK: 0.012"-4" WD: 0.75"-98"		THK: 0.01"-4" WD: 0.75"-98"
SEAMLESS PIPE & TUBE	OD: 0.75"-8.7" WT: 0.06"-0.75"	OD: 1.25"-14" WT: 0.1"-1.7"	OD: 4.5"-47" WT: 0.25"-7"	OD: 0.125"-2.5" WT: 0.01"-0.25"		OD: 4.5"-26" WT: 0.1"-1"	OD: 3"-13.375" WT: 0.25"-2"		OD: 0.125"-47" WT: 0.01"-7"
WELDED PIPE & TUBE				OD: 0.125"-8" WT: 0.02"-0.12"					OD: 0.125"-8" WT: 0.02"-0.12"
FITTINGS		OD: 1.25"-60" WT: 0.1"-6"			OD: 0.5"-48" WT: 0.1"-1"				OD: 0.5"-60" WT: 0.1"-6"
FORGINGS/ RINGS			OPEN/CLOSED DIE ROLLED RINGS						OPEN/CLOSED DIE ROLLED RINGS
FINISH MACHINE									